

# Acceptable Red Hide Shades



Dark Red



Medium Red



Orange to Medium Red



Red Variegated Patten



Light Red



Yellow with no shading to white



# Unacceptable Red Hide Shades and Characteristics



Brown or Grey



Light to White

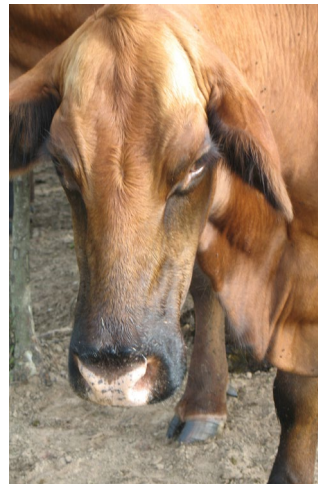


Any dark line anywhere on the hide is deemed as brindle and not acceptable and allowed



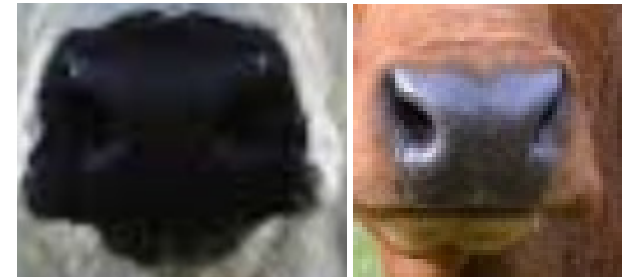
**White Legs**

White is white...  
cream, tan & beige are acceptable"



**Black Muzzles**

black pigment/hair must go  
completely around the muzzle



**Black Nose**

The mucous member must  
not be completely black, gray  
to lighter is deemed  
acceptable.

IBBA Show Committee  
Red Brangus Color Inspection Guidelines  
May 2023

Nose or Mucous Membrane

Allowed

- The ideal color is pink
- Shades of gray or pink with gray freckles

Disallowed

- Solid Black pigment. Black is Black

Muzzle

Allowed

- Dark pigmentation along the lower lips of the animal's mouth

Disallowed

- Black pigmentation that extends fully around the edge of the nose (mucous membrane)
- Black streaking, stripes or brindle that extends in the area of the muzzle between the nose and the eyes

Brindle

Disallowed

- No dark stripe or dark striping is allowed on the body, neck and face of an animal. This is considered brindling

White

Disallowed

- White pigmentation that extends in front of the umbilical cord attachment scar of the navel. This includes white spots in elbow pockets.

Allowed

- White pigmentation that extends behind the umbilical cord attachment scar of the navel. This includes white in the flank and on the udder

Color

Allowed

- Refer to the approved Red Color Score Chart
- Yellow animals that are deemed to match the lightest allowable color must be solid in color, with no white shading

Shading

Allowed

- Shading of an animal hide from dark to lighter, with lighter including tan, beige and yellow.

Disallowed

- Shading of an animal hide or hair to white. However, white must be white and not the allowable shades listed above

Birth marks

Allowed

- Discoloration that can be determined to be a birth mark is allowed

Tail Switch

Allowed

- Red, Black and White tail switches